

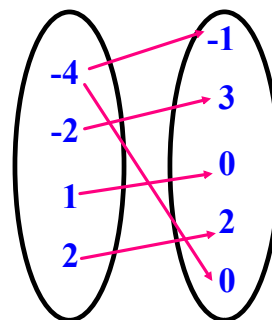
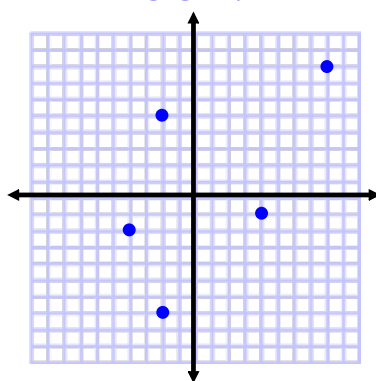
## 2.1 Introduction to Functions

A RELATION is a set of ordered pairs.

Relations can be shown...

- Using braces.  $\{(-4,-1),(-2,3),(1,0),(2,2),(-2,0)\}$
- Using tables.
- Using graphs.
- Using mappings.

x	y
-4	-1
-2	3
1	0
2	2
-2	0



The DOMAIN is the set of all possible values of the first variable (*independent variable*).

The RANGE is the set of all possible values of the second variable (*dependent variable*).

A FUNCTION is a relation such that each value of the domain is paired with *exactly one value* of the range.

In other words...the domain CANNOT repeat!

A LINEAR FUNCTION is the graph of a line.

It is in the form of  $y = mx + b$ .

ARE THE FOLLOWING FUNCTIONS?

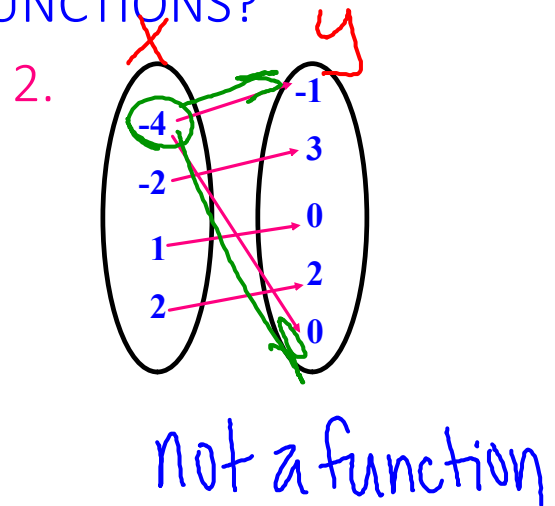
1.  $\{(1,3), (2,5), (3,4), (5,6)\}$   
Function

3.  $\{(-1,1), (0,3), (2,3), (-1,4)\}$   
not a function

4.

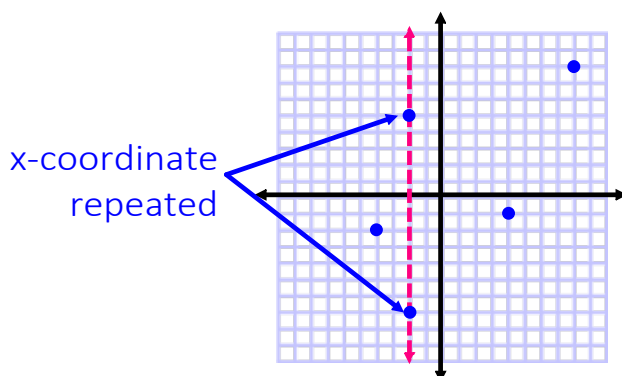
x	y
-4	-1
-2	3
1	0
2	2
-2	0

Not a function



To determine if a graph is a function, use the vertical line test (VLT).

If a vertical line passes through more than one point on the graph of a relation, then the relation is **NOT** a function.

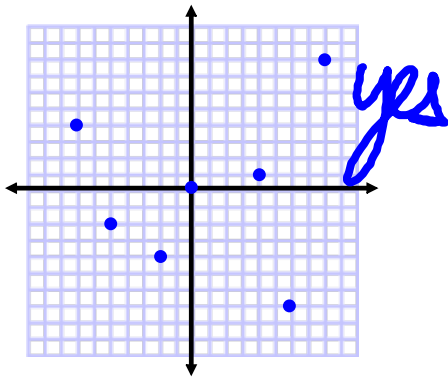


More VLT  
Examples

Using VLT  
Worksheet

Determine if each graph is a function.  
Then state the domain and range of each.

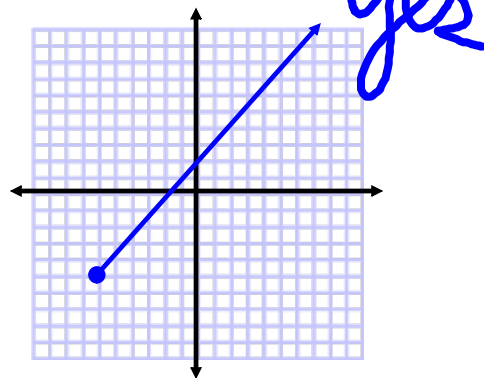
5.



$$D: \{-7, -5, -2, 0, 4, 6, 8\}$$

$$R: \{-7, -4, -2, 0, 1, 4, 8\}$$

6.

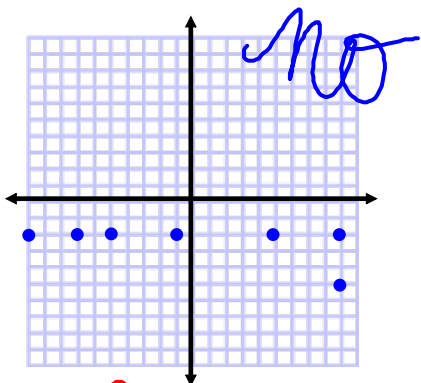


$$D: x \geq -6$$

$$R: y \geq -5$$

Determine if each graph is a function.  
Then state the domain and range of each.

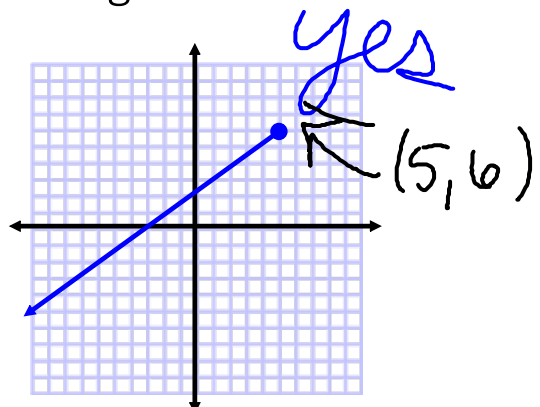
7.



$$D: \{-10, -7, -5, -1, 5, 9\}$$

$$R: \{-5, -2\}$$

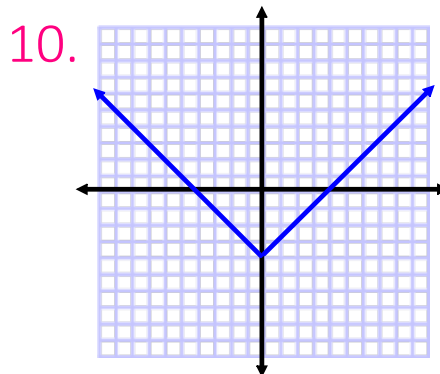
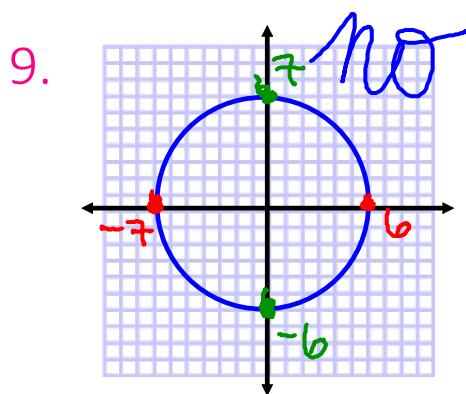
8.



$$D: x \leq 5$$

$$R: y \leq 6$$

Determine if each graph is a function.  
Then state the domain and range of each.



$$D: -7 \leq x \leq 6$$

$$R: -6 \leq y \leq 7$$

An equation can represent a function.  
This can be written in function notation.

$$y = 2x - 5 \longrightarrow f(x) = 2x - 5$$

$x$  is the independent variable  
 $y$ , or  $f(x)$ , is the dependent variable

Evaluate each function for the given value of  $x$ .

11.  $f(x) = \frac{1}{3}x - 7$  for  $x = -11$

12.  $g(x) = -x^2 + 4x - 5$  for  $x = 9$

13.  $h(x) = \frac{4x - 9}{2x + 1}$  for  $x = \frac{5}{2}$

14. The volume of a cube with side length  $s$  is given by the function  $V(s) = s^3$ .

a) Find  $V(5)$ .

b) Explain what  $V(5)$  represents.

## Attachments

---

VLТ Examples.pdf

Using VLT Wksht.pdf