

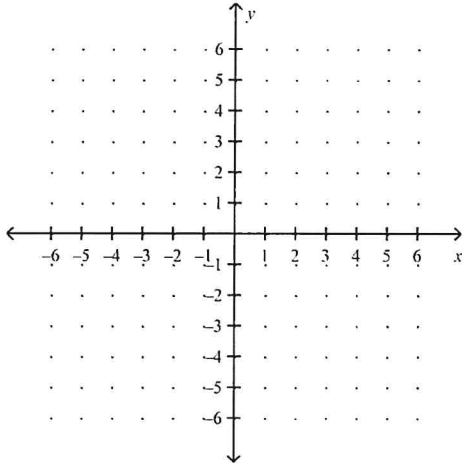
Name: _____

Date: _____

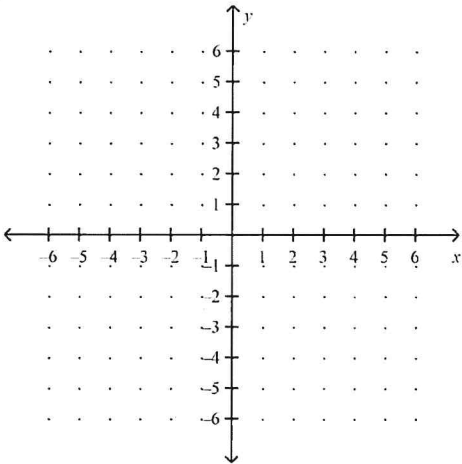
8th Grade Pre-Algebra 9.5 Review Worksheet

Write the slope and y-intercept for each equation. Then, graph the equation using the slope and y-intercept. Make sure the equation is in slope-intercept form.

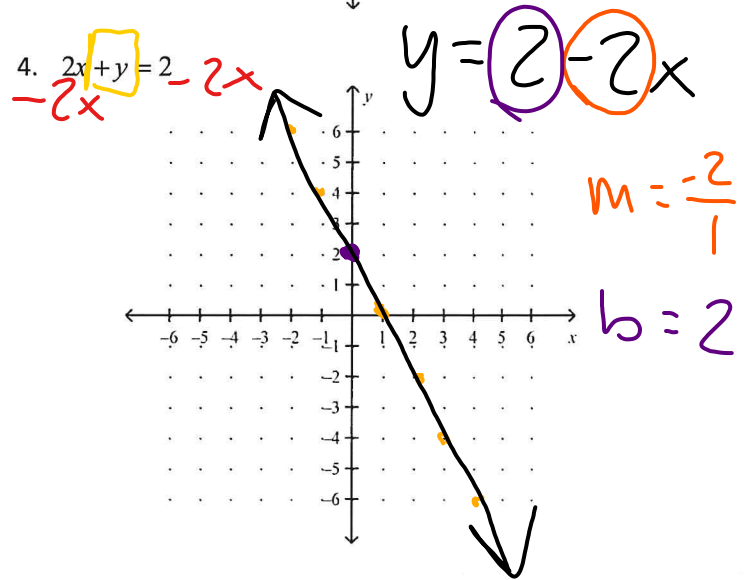
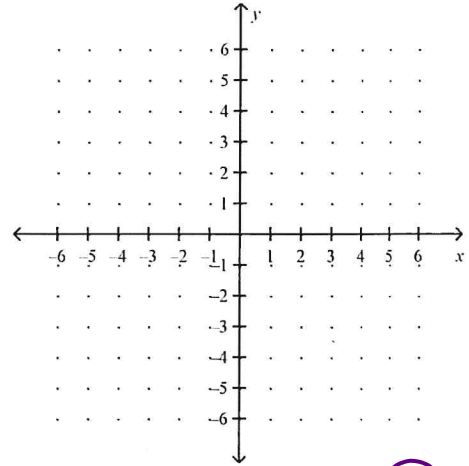
1. $y = 3x - 4$



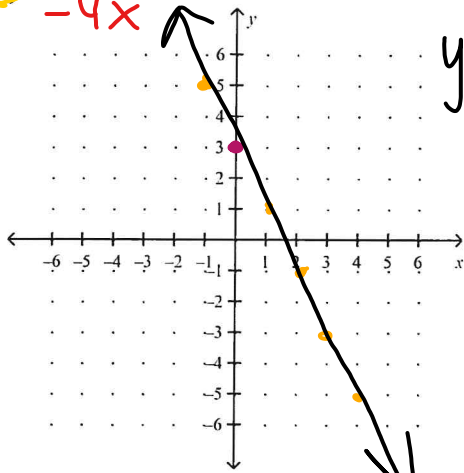
2. $y = \frac{2}{3}x + 5$



3. $y = \frac{-1}{3}x + 4$



5. $4x - 2y = 6$
 $-4x$ $-2y$



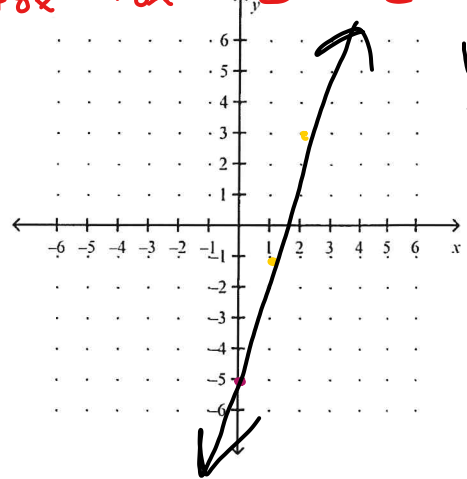
$$\frac{2y}{2} = \frac{6}{2} - \frac{4x}{2}$$

$$y = 3 - 2x$$

$$m = \frac{-2}{1}$$

$$b = 3$$

8. $2y - 8x = -10$
 $+8x$ $+8x$



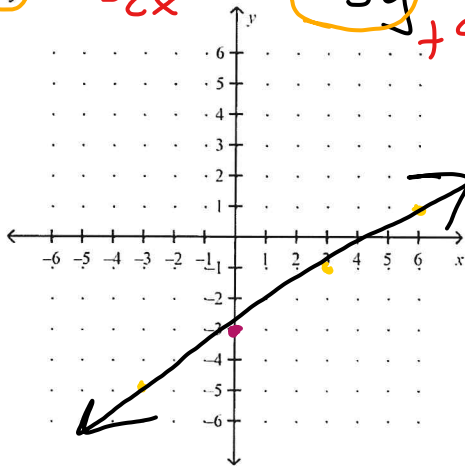
$$\frac{2y}{2} = \frac{-10}{2} + \frac{8x}{2}$$

$$y = -5 + 4x$$

$$m = \frac{4}{1}$$

$$b = -5$$

6. $2x - 3y - 9 = 0$
 $-2x$ $-3y$



$$-3y - 9 = -2x$$

$$\frac{-3y}{-3} = \frac{-2x}{-3} + \frac{9}{-3}$$

$$y = \frac{2}{3}x - 3$$

$$m = \frac{2}{3}$$

$$b = -3$$

7. $y = 7x + 3$

$$m = \frac{7}{1}$$

